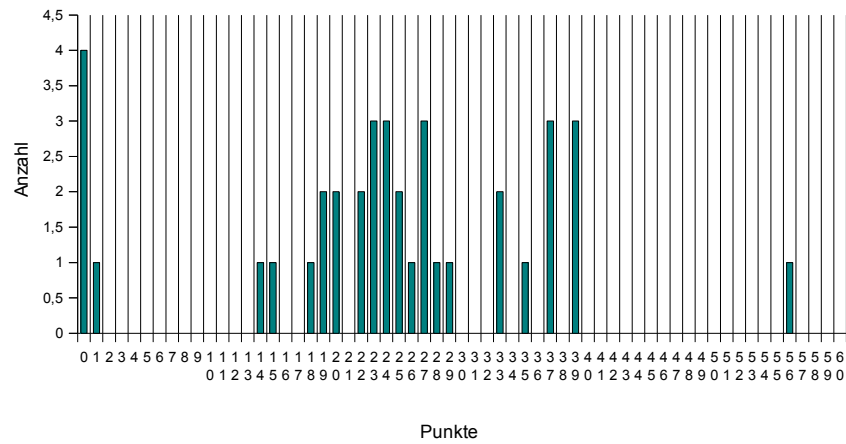
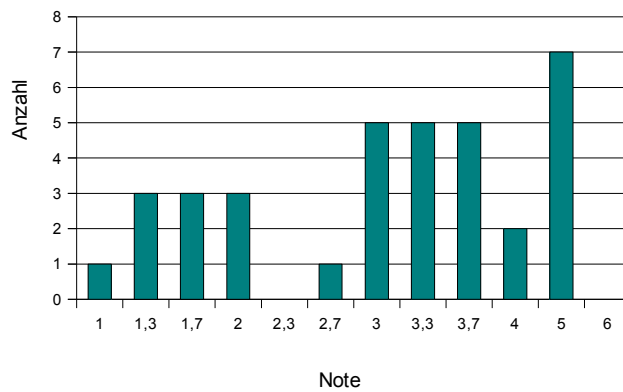


Punkteverteilung

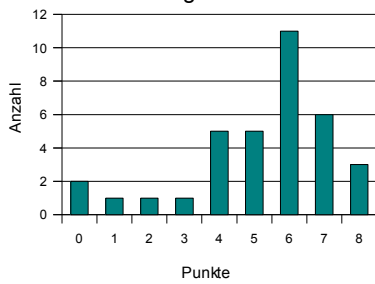


Schnitt Teilnehmer 3,19
Schnitt Bestandene 2,74
Median alle 3,30

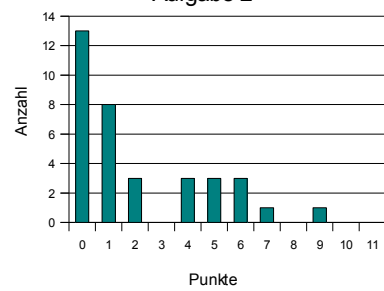
Notenverteilung



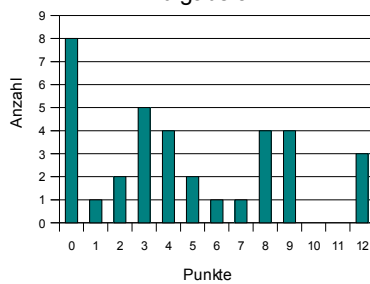
Aufgabe 1



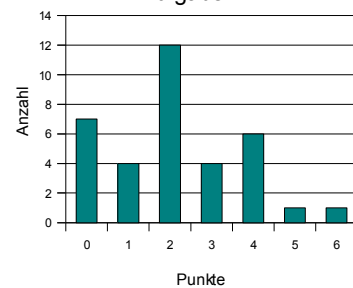
Aufgabe 2

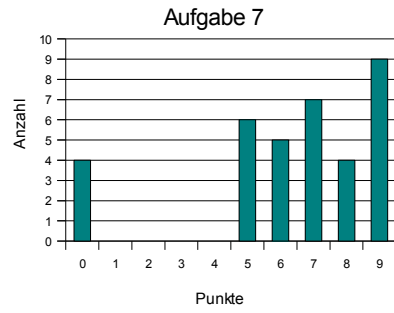
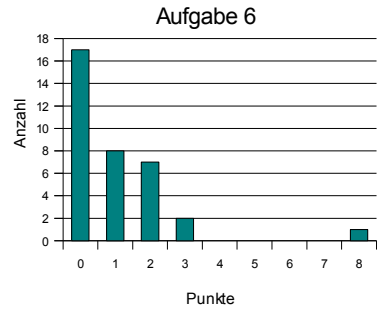
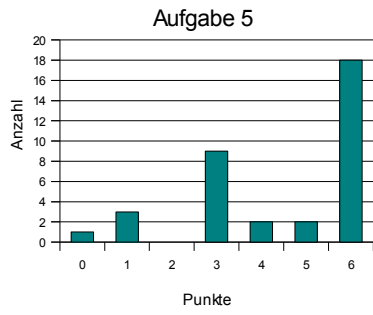


Aufgabe 3



Aufgabe 4





Note	ab Punktzahl	Anzahl	Kumulativ	Prozentual
1	40	1	1	2,9%
1,3	38	3	4	8,6%
1,7	36	3	7	8,6%
2	33	3	10	8,6%
2,3	31	0	10	0,0%
2,7	29	1	11	2,9%
3	26	5	16	14,3%
3,3	24	5	21	14,3%
3,7	22	5	26	14,3%
4	20	2	28	5,7%
5	0	7	35	20,0%